

# BIRTHPLACE BOUND

Girl Scout Troop Visit Information Book  
2010



**Volume 30**

# DISCOVER SAVANNAH WITH YOUR GIRL SCOUTS!



*Bring your Girl Scouts on an EF tour to where it all began—historic Savannah! From the birthplace of Girl Scouts founder Juliette Gordon Low to the first Girl Scout headquarters, we'll show your troop the best sites on our 4-day tour of Savannah, designed just for Girl Scouts.*

## IT'S EASY

We make traveling with your Girl Scouts easy. Your dedicated EF Tour Consultant works with you to plan the perfect trip, and your full-time EF Tour Director handles all of the details on tour.

## IT'S AFFORDABLE

We keep our prices low so more Girl Scouts can experience their nation and the world. Our tours are all-inclusive, and we never sacrifice quality, comfort or safety.

EF Education First has been making educational travel easy, safe and affordable for more than 40 years. Choose from more than 300 international tours, including special itineraries created just for Girl Scouts and their leaders! Contact us today at **1-800-457-9023** or visit us at [efours.com/girlscouts](http://efours.com/girlscouts).

## TOUR HIGHLIGHTS

*Savannah, Georgia: Birthplace of the Girl Scouts*

- Visit to the Juliette Gordon Low birthplace
- Walking tour of Savannah
- Visit to the first Girl Scout headquarters
- Visit to Tybee Island

## EVERY EF TOUR INCLUDES:

- Round-trip airfare and local transportation
- Hotel accommodations
- Full-time EF Tour Director
- Guided sightseeing tours and walking tours
- Breakfast and dinner daily



**Educational  
Tours**

# TABLE OF CONTENTS

## ABOUT THE BIRTHPLACE AND PROGRAMS

About the Birthplace. . . . .	2
Girl Scout Heritage Visit. . . . .	3
Special Interest Sessions . . . . .	4

## PLANNING AND MAKING A RESERVATION: FORMS

Reservation Procedures and Fees . . . . .	6
Reservation Request Form . . . . .	9

## TIPS AND ADVICE FOR THE BEST TRIP

Be Prepared . . . . .	11
Frequently Asked Questions . . . . .	12
Advice from Birthplace Veterans . . . . .	13
Museum Store . . . . .	14
Questions to Keep in Mind . . . . .	15
Sojourn in Savannah Leader Training Registration Form. . . . .	15
Service Projects . . . . .	16
Girl Scouts' Own and Pinning Ceremony. . . . .	18
How does the Birthplace fit into the new leadership Journeys . . . . .	16

## SIGHTSEEING AND OTHER SERVICES

Sightseeing . . . . .	17
Juliette Low Birthplace Circle of Friends . . . . .	18
Map of Downtown Savannah . . . . .	19
Index to Advertisers . . . . .	20-21
Sightseeing, Activity and Visitor Information Charts. . . . .	22-27
Museum, Sites and Historic Houses . . . . .	22-24
Hotels, Campgrounds and Sleeping Bag Accommodations . . . . .	24-25
Historic Churches and Synagogues . . . . .	25
Tour Companies, Activities and Restaurants . . . . .	26-27
General Information and Services . . . . .	22
Hospitals, Lifeguard. . . . .	27
Savannah Area Visitors' and Convention Bureau. . . . .	28
Advertisements for Lodging, Food and Attractions. . . . .	.IFC,29-IBC
Birthplace Books, Patches and Pins . . . . .	67, 68

# Table of Contents

**Birthplace Bound 2010** is Vol. 30 of the Girl Scout troop information booklet of the Juliette Gordon Low Birthplace, a Girl Scout National Center. It may not be reproduced in any format, either electronically or in print. It is published annually and mailed free of charge to Girl Scout troops, and groups who wish to visit the Birthplace. To request a copy of Birthplace Bound, please contact 10 East Oglethorpe Avenue, Savannah, GA 31401, phone: 912-233-4501, [info@juliettelowbirthplace.org](mailto:info@juliettelowbirthplace.org), [www.juliettegordonlowbirthplace.org](http://www.juliettegordonlowbirthplace.org) Juliette Gordon Low Birthplace on Facebook



# About the Birthplace

## ABOUT THE BIRTHPLACE

The Birthplace of Juliette Gordon Low, National Historic Landmark and Girl Scout National Center, located in downtown Savannah, was the Gordon family home where Daisy Low (Juliette Magill Kinzie Gordon) was born on October 31, 1860. The townhouse, completed in 1821, is furnished as it was in 1886, the year of Daisy's marriage. It was also the year her parents renovated and enlarged the house and the year of the earthquake of 1886. In 1912, while visiting her parents, Daisy made that fateful call, "come right over, I've got something for the girls of Savannah, and all America, and all the world, and we're going to start it tonight!"

The house was saved by Girl Scouts of the USA, who purchased the house in 1953 to be a Girl Scout program center and historic house museum. In 1965, it became Savannah's first National Historic Landmark. The Juliette Low Birthplace is one of the most popular house museums in the United States. The house is open to Girl Scout troops, tour groups and the general public. Throughout the year, Girl Scout troops have the opportunity to meet other troops from all over the country and share activities. Visitors always include a mixture of families, individuals, whole Girl Scout troops, alumnae Girl Scouts, bus tour groups, school groups, VIPs and the touring public from all over the world! Girl Scouts also may expect to meet Savannahians of diverse cultural, geographic, and ethnic backgrounds.



Birthplace Bound 2010



Birthplace of Juliette Gordon Low,  
National Historic Landmark

## HOURS OF OPERATION

The Juliette Gordon Low Birthplace is open to the public Monday– Saturday 10:00 a.m. – 4:00 p.m. and Sundays 11:00 a.m. – 4:00 p.m.. It is closed Wednesdays from November - February; the first two weeks in January; some Sundays and all major holidays. Reservations are required for all group visits. Office hours are Monday – Friday, 9:00 a.m. – 4:30 p.m., Eastern Time. Visits with curatorial and archival staff are by appointment only.

## TO CONTACT US

The Birthplace is located on the corner of Oglethorpe Avenue and Bull Street in downtown Savannah. Our address is 10 East Oglethorpe Avenue, Savannah, GA 31401. We can be reached by phone: (912) 233-4501, fax: (912) 233-4659, or e-mail: [info@juliettelowbirthplace.org](mailto:info@juliettelowbirthplace.org). Our Web site is [www.juliettegordonlowbirthplace.org](http://www.juliettegordonlowbirthplace.org) and we are Juliette Gordon Low Birthplace on Facebook.

### 2010 Restoration Projects

In 2006 engineers discovered that the floors in the middle of the house have sunk due to the added weight of the 1886 addition. Structural engineers designed a plan to reinforce the floors, and the project will be completed by the end of 2009. In 2010, we will continue with restoration to prevent further damage to preserve and protect the Birthplace for future Girl Scouts, friends and visitors to enjoy.

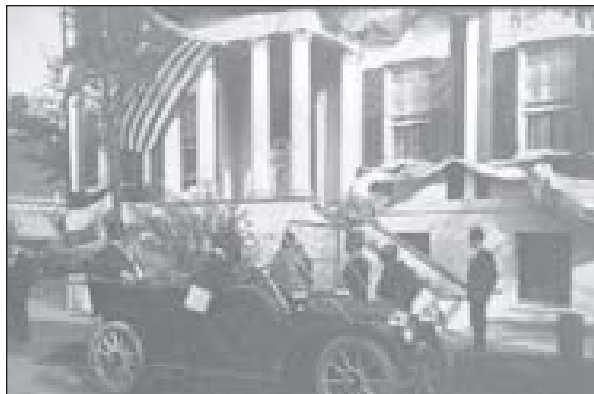
# Girl Scout Heritage Visit

## GIRL SCOUT HERITAGE VISIT

*The Girl Scout Heritage Visit* (GSHV) is the core program for Girl Scouts in troops. The GSHV is designed for Girl Scout Junior, Cadette, Senior and Ambassador troops. The GSHV consists of a Special Interest Session; a PowerPoint orientation; a tour of the two restored floors of the house—the parlor and bedroom floors; a Girl Scouts' Own pinning ceremony in the historic garden, planned and conducted by each troop; and shopping in the museum store.

*Special Interest Sessions* (SIS) are a fun hands-on part of the GSHV. They focus on various topics exploring nineteenth-century life and the early days of Girl Scouting. These sessions last 1 1/2 to 2 hours. Girl Scout Seniors and Ambassadors can extend their Birthplace experience through a *Victorian Supper*, which is a 3-hour evening session offered in conjunction with their GSHV.

All troops and Juliettes who visit will want to follow *Juliette Low's Savannah Historic Trail*, a taped walking tour which introduces Savannah as it was in Daisy's time. *NOTE: The GSHV is not designed for Girl Scout Daisy and Brownies; but they may want to start planning to visit after they fly up to Girl Scouts Juniors. Regional Daisy and Brownie Troops -- inquire for special regional events!*



President Taft's Visit to the Birthplace in 1909.

### ELEVATOR

In 2004, the Juliette Low Birthplace was proud to install an elevator for accessibility to the historic house. Please consult us for special provisions needed for any Girl Scout. Our guidebook, *More about the Juliette Low Center*, is available to enhance the tour for hearing impaired visitors. We can make arrangements to make all Special Interest Sessions accessible. Please give us advance notice of any special needs and/or wheelchair visitors.



# Special Interest Sessions

## SPECIAL INTEREST SESSIONS

The following are descriptions of the *Special Interest Sessions* available to girls who participate in the Girl Scout Heritage Visit - the *SIS* is designed for the girls to **CONNECT** with Daisy Low and the early Girl Scouts and to equip them to **TAKE ACTION** upon their return home. Some of the sessions are targeted to specific ages, while others are appropriate to all ages. When you make your reservation, you should consider what level the girls will be when they come for their visit. The Special Interest Sessions are held in the Carriage House or Stable Building of the Birthplace.

### COME INTO MY PARLOR:

**Such Fun!** All Ages / grade 4 -12

Equipment: None; Maximum 25

What did Daisy and her friends and family do for fun when they got together at home? The children loved to invent plays to present to the adults, tell stories, and play games—so *Come into Our Parlor* as we play favorite Victorian games, all the while behaving like proper Victorian young ladies. We will learn old-fashioned manners, look at stereoviews, play with old fashioned toys and play parlor and party games beloved by children and adults! Participants will make a popular craft, and girls dress-up in Victorian smocks. *The activities in this session are best suited to a group of 12 or more - if your troop is small inquire about joining another troop.*

### FASHION, FABRIC AND FRILLS

Cadette / Senior / Ambassador grades 6-12

Equipment: None; Maximum 25

Do you know the difference between a hoop skirt and a bustle skirt? Exactly how small can a corset make your waist? What was under those dresses to make them look like they did? Using period pictures, we will investigate fashions from 1860 – 1900. The highlight of the session is when each girl laces up a corset to feel what it was like to be a nineteenth-century girl. *Fashion, Fabric and Frills* is the only opportunity to see pieces from the Birthplace costume collection, particularly rare Victorian undergarments. *Fashion, Fabric and Frills* is not a dress-up session.

## FORWARD MARCH

All ages/ grade 4-12

Equipment: Comfortable shoes (no flip-flops), Maximum 25

Join us in commemorating the beginning years of Girl Scouting! The Girl Scouts are “making good,” as you will see in the first Girl Scout movie, *The Golden Eaglet*. Try your hand at some Girl Scout skills from *How Girls Can Help Their Country*, the 1913 Handbook for Girl Scouts. Setting up exercises, marching, Kim’s game, and semaphore signaling will help you qualify as an old-style Girl Scout. Put on medieval pageant costumes to reenact musical tableaux, plays and skits popular with early Girl Scouts. You will also investigate old handbooks and Girl Scout uniforms and customs, as you become one of Juliette Low’s Girl Scouts. *The activities in this session are best suited to a group of 12 or more - if your troop is small inquire about joining another troop. There is some duplication by 1st HQ programs -please inquire.*



### POP GOES THE WEASEL A Textile Adventure

Junior / Cadette/ Senior / Ambassador grades 5-12

Equipment: None; Maximum 25

Did you know that Juliette Low’s first Girl Guide Company in Scotland learned spinning along with compass and map reading, semaphore signaling, and outdoor cooking? Textile investigations have played a part in Girl Scouting throughout the years. During this session, your group will learn about fibers and how they are processed. You will try your hand at drop spinning and treadle loom weaving. Each participant will begin one take-home project. This is not a dress-up session.



## RAINY DAY IN 1870

*Junior / grades 4-5*

Equipment: Tote bag for carrying your projects home, embroidery hoops and needles to continue projects started during the session; Maximum 25

Dress up in costumes and try out a girl's life in Daisy's day. Learned to be proper young ladies, to do fancy needlework and all kinds of paper crafts. Try some fun things Daisy did as a child: cut silhouettes, use a fan, embroider a bookmark like the one Daisy made for her papa, make tinsel pictures and color Daisy's paper dolls. The costumes for this session are cotton dresses donated by troops as a service project. Lots of projects are started to be finished at home. Girls get to keep everything they make, but equipment like fans, hoops, needles and scissors need to stay for the next troop session. *This SIS is recommended for troops with younger girls.*

## SISTERS OF THE PALETTE: Victorian Arts and Accomplishments

*Junior / Cadette / Senior / Ambassador / grades 5-12*

Equipment: Tote bag for bringing home art projects; Maximum 25

Why do we remember Daisy? Because she founded Girl Scouts of the USA, of course, but she was also an artist. Women sculptors and painters called themselves the "Sisters of the Palette" in her days. During this session you learn about women artists during Daisy's lifetime and about her artwork. You will try your hand at several art forms which may include sketching, watercolors, printmaking and Daisy's favorite—sculpting. The session is introductory level and is not a dress-up session.

## VICTORIAN VENTURE

*Cadette / grades 6-8*

Equipment: None; Maximum 20

Time travel back to Daisy's time and try your hand at young ladies' activities like using a fan, fancy writing, and making a ladies' craft like a punch paper bookmark or bargello pin cushion. Dress up in Victorian black and dark colors -- hoop, shawl, and accessories, and practice formal Victorian manners. Highlighted is a tea party using a silver tea service. By the end of the session, you will become a young lady from the 1880s and will have a craft project to finish at home.



## VICTORIAN SUPPER

*Senior/ Ambassador / grades 10-12*

Equipment: Optional dress flats to wear with a period dress. We provide costumes but some girls prefer to bring their own shoes; Maximum 20

This session is held in the evening from 4:30 -7:30 p.m.. Girl Scout Seniors and Ambassadors may choose this as a part of the daytime GSHV in addition to a daytime SIS. It provides an opportunity for young women to experience another aspect of life in the 1870s and 1880s by sharing a traditional nineteenth-century dinner while wearing period costumes. Try typical Southern foods: a sample menu could include chicken, stew, okra, squash casserole, sweet potato soufflé, biscuits, greens or black-eyed peas. Using our china, silver, glasses, linens and costumes, you will enjoy a country-style dinner prepared by a local restaurant, with a Birthplace staff person. Of course, we'll all "clean up" together!

# Reservation Procedures

## RESERVATION PROCEDURES

For the best possible experience, careful planning is necessary. *Reservations are required for all group tours or program visits.*

### #1 CALL OR E-MAIL FOR A TENTATIVE RESERVATION

- ◆ Select several possible weeks for your GSHV. Remember that the Birthplace is busiest during summer vacation and other holidays. Select first and second choices for Special Interest Sessions.
- ◆ The Girl Scout troop advisor or parent must make the reservation. We do not accept reservations from third parties (e.g. travel agents or tour operators), however, we are delighted to discuss the schedule with your tour operator!

### #2 COMPLETE ENCLOSED RESERVATION REQUEST FORM

- ◆ Send an *Intent to Travel* form to your Girl Scout Council for authorization. We will notify your council of your reservation. Your council will send your travel authorization directly to us.
- ◆ Remember extra adult chaperones and tag-alongs are only accepted for Girl Scout programs on a space-available basis. Extra adults may choose to take a general tour of the house, but they will not be in the same room as the girls at the same time, due to space restrictions.
- ◆ Return the *Reservation Request Form* with a credit/debit card number, money order, troop or council check to the Juliette Gordon Low Birthplace for your **non-refundable** reservation fee. The reservation fee is \$25.00 for each Girl Scout Heritage Visit time slot. Your request will be returned if a payment is not attached, and you may lose your reservation.
- ◆ Your troop check is considered authorization to convert it into an electronic fund transfer. Your check may be processed as a Check Replacement Document drawn against your account. Funds may be withdrawn as soon as the same day you make your payment. You will not receive your check back from your financial institution.
- ◆ All fee payments must include contact adult's name, reservation number and date of visit to be credited to your account.

- ◆ If your Girl Scout Council is sending your fee payment, please request your council to include your reservation number on the check.
- ◆ Mail the *Reservation Request Form* to the Birthplace within two weeks after making your tentative reservation.

### #3 CONFIRMATION

- ◆ Your reservation will be confirmed via e-mail. Wait for Birthplace confirmation before proceeding with your plans. If you do not receive confirmation within one month of sending or calling in the reservation request, notify the Birthplace.
- ◆ After your reservation is made at the Birthplace, make reservations for your travel, lodging, dining, and other activities. *Use your Birthplace Reservation # to identify your troop when making all Savannah reservations.*
- ◆ You will find advertisements from hotels, motels, restaurants and sites that actively seek Girl Scout business in the back of this book/PDF.

### #4 RECONFIRMATION

- ◆ Three months prior to your visit date all fees, your travel itinerary and the name of an emergency contact person are due. Fees are **non-refundable**; please do not pay for any tickets you may not use.
- ◆ We will make special arrangements to make all SIS activities accessible. Please give us advance notice of any special needs and/or wheelchair visitors so we may be prepared.
- ◆ When you arrive, you will receive a color-coded tag for each participant. The tag serves as a ticket for the reserved programs, indicates your schedule for the day, and identifies your troop. *All girl and adult participants must wear their tags while at the site.*
- ◆ We accept troop and council checks, debit/credit cards, and money orders. Checks are considered authorization to convert fees into an electronic fund transfer. Your check may be processed as a Check Replacement Document drawn against your account. Funds may be withdrawn as soon as the same day you make your payment. You will not receive your check back from your financial institution.

## #5 CHECK-IN

- ◆ In your reconfirmation, you will be given a schedule for the day, including a check-in time.
- ◆ Plan to park all cars and vans at the Liberty Street garage, corner of Montgomery and Liberty, 301 W. Liberty. Buses and motor coaches are allowed 10 minutes to drop off or pick up groups. The bus space is on Oglethorpe Avenue at the front of the house.
- ◆ During check-in, **1 adult** purchases pins, patches, and parking passes, and reports the final statistics for their group. This is a good time to donate troop crafts, costumes or *Circle of Friends* contributions. At this time, the leader will also get a summary of the day and any final details.
- ◆ Since we do not have a waiting area, the girls and other adults will go on a brief scavenger hunt while **1 adult** checks in. *Please do not plan to arrive early.*
- ◆ On a busy day, we may have several Girl Scout troops checking in, so it is important to be ready to check in at the assigned time.
- ◆ Girls and adults will best represent the Girl Scout movement in official uniform or a Birthplace T-shirt.
- ◆ We welcome troop checks, debit/credit cards, personal checks, travelers' checks and cash in person.

## FEES 2010

### TROOP RESERVATION FEE

**\$25 per group**

This is a **non-refundable** fee covering the cost of processing your troop's reservation. It is not deducted from the per-person admission charge. A \$25 fee is required for each GSHV slot reserved. A troop reservation may be transferred one time at no extra cost.

### GIRL SCOUT HERITAGE VISIT

**\$24 per person, \$170.00 minimum**

Includes orientation and a house tour, troop certificate, souvenir tags and all supplies for one Special Interest Session for each participant. All fees are **non-refundable**. (*Subject to change October 1*)

### JULIETTE LOW'S SAVANNAH HISTORIC TRAIL

**\$10 per patrol**

This self-guided program includes tape recorder and cassette rental, marked map and information sheet. You will leave \$20 or a credit card and may keep the recorder and tape overnight.

### VICTORIAN SUPPER

**\$22 per person; \$160.00 minimum  
Senior/Ambassador grades 10-12**

This three-hour Senior/Ambassador-only program includes a traditional Southern dinner offered to extend the GSHV. A staff person will join you for dinner and lead a program about table setting, etiquette and dining.

### OFFICIAL JULIETTE LOW BIRTHPLACE PINS

**Group purchase – \$3.00**

**Individual purchase – \$3.50**

Pins may be purchased at check-in for the discounted rate. If they are purchased individually during the shopping time, they are full price. *Pins may not be ordered in advance.*

### PARKING PASSES

**\$7.00 per vehicle**

Parking can be difficult in downtown Savannah, but the pass makes it easier! They are issued by the City of Savannah and may be purchased at the time of check-in. These passes are good for 24 hours and allow visitors to park at any one-hour or longer meter or at any municipal parking lot or garage. We recommend all troops plan to park at the nearby Liberty Street Garage, 301 W Liberty St., 31401. This price is subject to change without notice.

### TAXES

A 7% sales tax is collected on all merchandise.

**There are no Georgia state sales tax exemptions for Girl Scout troops.**

# Reservation Procedures

## COUNTDOWN FOR YOUR VISIT TO THE BIRTHPLACE

**DISCOVER** Read *Safety-Wise*, Chapter 5: Planning Trips with Girl Scouts, and *Birthplace Bound* and share the information with the troop as you plan your visit together.

### 12 MONTHS BEFORE VISIT

◆ Call or e-mail the Birthplace for tentative reservations. Reservations are required for ALL group visits. Small troops need less advance time.

*Call 12 months in advance for June, M. L. King, and President's Day weekends*

*Call 9 months in advance for Spring Break and Spring weekends.*

*Call 3-6 months in advance for weekends September - December.*

- ◆ Send intent to travel/travel request forms to your Girl Scout Council.
- ◆ Mail reservation request with \$25 **non-refundable** fee per GSHV within two weeks.
- ◆ Receive confirmation from the Birthplace.
- ◆ Discuss and develop "Trip Agreements" for trip manners, rules, etiquette and uniform.
- ◆ Make reservations for lodging and for any other activities you plan during your visit. **Use your Birthplace Reservation # when making all other reservations.**

### 3 TO 4 MONTHS BEFORE VISIT

- ◆ Mail reconfirmation form, non-refundable fee payment in full, itinerary, rooming list and emergency contact name and phone #.
- ◆ Sign trip agreements. Your behavior will impact how all Girl Scouts are treated in Savannah! Collect signed permissions & health forms.
- ◆ Research Savannah and Daisy Low.
- ◆ Review "Be Prepared" (page 11) and your itinerary to develop packing list.



- ◆ Call the Museum Store to place any advance orders for books or Birthplace T-shirts. *Pins and patches are purchased at check-in.*

### 1 MONTH BEFORE VISIT

- ◆ Plan Girl Scout's Own and pinning ceremony. See page 16 for some ideas!
- ◆ Review your rules and guidelines for the visit.
- ◆ Reconfirm all your reservations.
- ◆ Review packing list. Girls and adults should wear official uniform or Birthplace T-shirts.

### 1 WEEK BEFORE VISIT

- ◆ Check weather forecast for trip dates (See pp. 33-34 of *Safety-Wise*).
- ◆ Familiarize all participants with the schedule, rules and emergency procedures. Review travel routes, maps and directions.

### ON THE DAY OF YOUR VISIT

- ◆ Arrive at the assigned check-in time in uniform or Birthplace T-shirts. We will give you color-coded tags for all girl and adult participants. Be prepared to purchase pins & patches, join/renew the *Circle of Friends*, and contribute troop crafts/costumes.
- ◆ **Meet us at the garden gate on the west side of the house on Bull Street.** The gate will be locked and there is no bell. Staff will greet you. If staff are not already waiting at the gate, be patient, someone will come! The main front entrance underneath the portico does not open until 10:00 a.m. Monday through Saturday, and 11:00 a.m. on Sunday.
- ◆ Check in with the Birthplace staff.

# JULIETTE GORDON LOW BIRTHPLACE

## GIRL SCOUT RESERVATION REQUEST

*Please fill out form completely. Print or type only.*

Age Level:  Junior / Grade 4-5  Cadette/ Grade 6-8  Senior / Grade 9 - 10

Ambassador/ Grade 11 - 12  Council Group/Service Unit Group  Adult Sojourner

Troop Number \_\_\_\_\_ Reservation Number \_\_\_\_\_

Council \_\_\_\_\_

Troop Contact \_\_\_\_\_

Address \_\_\_\_\_

City \_\_\_\_\_ State \_\_\_\_\_ Zip \_\_\_\_\_

Day Phone \_\_\_\_\_ Evening/Cell Phone \_\_\_\_\_

Fax \_\_\_\_\_ E-mail \_\_\_\_\_

Driver's License or State ID Number \_\_\_\_\_

Total # of Participants \_\_\_\_\_ # of Girls \_\_\_\_\_ # of Adult Girl Scout Troop Advisors

\_\_\_\_\_ # Other Adult Chaperones \_\_\_\_\_ # other children

I have attended **Sojourn in Savannah**  I am a repeat visitor

We are **Circle of Friends** members

### PLEASE CONFIRM THE FOLLOWING FOR OUR GROUP

#### ORIENTATION AND HOUSE TOUR

Day of Week \_\_\_\_\_ Month/Date/Year \_\_\_\_\_ OR Time \_\_\_\_\_

#### SPECIAL INTEREST SESSION

*(Topics are assigned on a first come, first served basis. The Birthplace reserves the right to change topics in case of staffing problems, space considerations or weather conditions.)*

First Choice \_\_\_\_\_ Second Choice \_\_\_\_\_

#### VICTORIAN SUPPER SAVANNAH STYLE *(Girl Scout Seniors and Ambassadors ONLY)*

Day of Week \_\_\_\_\_ Month/Day/Year \_\_\_\_\_

Does anyone need special assistance for accessibility?  Yes  No

If yes, please specify \_\_\_\_\_

---

---

---

**MAIL TO:** Juliette Gordon Low Birthplace

10 East Oglethorpe Avenue  
Savannah, GA 31401

Reservation Request Form

# Reservation Request Form

## PAYMENT INFORMATION

- My **non-refundable** reservation fee of \$25.00 per **Girl Scout Heritage Visit** is enclosed.
- Money Order    Pre-printed Troop Check    Girl Scout Council Check
- Credit/Debit Card

### Juliette Low Birthplace Circle of Friends!

- Our troop wants to join/renew membership

We have \_\_\_\_\_ members in our troop and would like to donate \$ \_\_\_\_\_  
(minimum \$1 per member, \$10 minimum per troop).

We would like to purchase \_\_\_\_\_ **Circle of Friends** Patches for \$3 each for a total of  
\$ \_\_\_\_\_ + \$ 3 Shipping and Handling.

- Enclosed is our donation and patch purchase in the amount of \$ \_\_\_\_\_
- Please charge our donation and patch purchase in the amount of \$ \_\_\_\_\_

I understand the reservation fee is **non- refundable**:

I understand that each remittance of payment by check is considered authorization to convert that particular check into an electronic fund transfer. If your check is unable to be converted, it may be processed as a Check Replacement Document drawn against your account. When we use information from your check to make an electronic fund transfer, funds may be withdrawn from your account as soon as the same day you make your payment, and you will not receive your check back from your financial institution.

Signature (If you are paying by credit/debit card please sign as on card. If paying by check, please sign as you sign on your check)

\_\_\_\_\_

For credit card payments (*check one*):  MasterCard    VISA    AMEX    Discover  
Name as it appears on card (*please print clearly*)

\_\_\_\_\_

Card Number \_\_\_\_\_

Expiration Date \_\_\_\_\_

Cardholder Verification Value Code (back of MC/Visa/Discover; front of Amex)

\_\_\_\_\_

## BE PREPARED!

**Be Prepared** to represent the Girl Scout movement by wearing official uniforms or Birthplace T-shirts during your whole visit to Savannah. For girls this is white shirt, khaki bottom and sash or vest. For adults, Navy blue and white with the scarf and pins.

**Be prepared** for a variety of temperatures and weather conditions. The museum is kept at a temperature between 68 and 72 degrees to protect the collection. This is a little cool for some, so you might want to pack a sweater for your visit.

**Be prepared** for very hot, humid weather from May to September. In the winter, Savannah's weather is relatively mild, but may seem colder because of the wind and high humidity.

**Be prepared** for mosquitoes and gnats with insect repellent to ward them off.

**Be prepared** with sunscreen to protect your skin from strong southern sun!

**Be prepared** for crowded conditions during the busiest times of the year. The house was built for a family so the number of people visiting must be limited and groups sometimes move along quickly or wait their turn to allow others a chance to see the house.

**Be prepared** to be on time for your programs - the site is often operating on a tight schedule, especially when two or more troops are participating in the same activity.

**Be prepared** for limited rest room facilities and indoor waiting areas.

**Be prepared** for a lot of walking. Many interesting sites in the historic district are within walking distance of each other, but when you visit several of them in a day, you might find yourself on your feet for a number of hours at a time. Bring comfortable walking shoes, and be sure to allow adequate time to walk from one place to another so you won't have to rush.

**Be prepared** to make plans for all meals ahead of time. Make reservations or place take-out orders ahead of time to avoid a long wait. If you bring a picnic lunch, label your coolers and boxes with your name and troop number.

**Be prepared** for hotels and restaurants to be fairly expensive. Savannah is a primary tourist destination so rates tend to be high.

**Be prepared** to observe all rules necessary

to protect the Birthplace and its historical collection. Food, drinks, and gum may not be taken into the museum. **Photography (still, cell phone or video) is not allowed in the historic house.** A few photos may be taken in program rooms during Special Interest Sessions.

**Be prepared** to protect the Birthplace by not touching or leaning against any of the objects or features in the museum. Since the rooms in the house are not large, please do not bring backpacks and unnecessary items that will add to the crowding.

**Be prepared** to be a courteous guest - please turn off all cell phones during your program and your house tour.

**Be prepared** to obey regulations set by the Fire Marshall which limit the number of persons allowed in a room at a time and also prohibit using lighted candles, sparklers or other fireworks during Girl Scouts' Own ceremonies.



## HELPFUL SUGGESTIONS

- ◆ Use the buddy system and large groups for safety in numbers.
- ◆ Leave all jewelry and valuables at home. If you must bring valuables along, like cameras, don't give criminals opportunities by leaving them unattended. Do not leave anything of value unattended in your hotel room, even for a few minutes.
- ◆ Never leave anything visible in your vehicle; it invites theft. Purchase a lock bar or alarm for your vehicle. Always lock your vehicle.
- ◆ Parking can be difficult, so plan to purchase a parking pass, and to walk some distance.
- ◆ During "lights-out", all girls should remain in their rooms.

# Be Prepared!

## FREQUENTLY ASKED QUESTIONS

**What uniforms are expected during our visit to Savannah?** Girl Scouts, their adult advisors and chaperones should plan to wear Birthplace T-shirts or official uniform to represent the Girl Scout movement. The Junior - Ambassador uniform is a white shirt, khaki bottoms, & sash/vest. Senior and Ambassador will also have a scarf. Adult uniform is navy blue clothing, scarf & pins.

**Can adults visit Savannah prior to the troop visit for a test run?** **YES!** Plan to attend *Sojourn in Savannah* before bringing a troop to the Birthplace. For details, contact the Birthplace. (See registration form on page 15)

**How do I get to the Birthplace from Interstate 95?** Take I-16 East to Savannah. Do not exit. I-16 ramps to Montgomery Street. Get into right lane. Proceed to the second light. Turn right at Oglethorpe Avenue. The Birthplace is four blocks east on the NE corner of Bull Street and Oglethorpe Avenue.

**Are you open to families and the general public?** **OF COURSE!** We are open to the general public Monday-Saturday from 10:00 am - 4:00 pm & Sunday from 11:00 am-4:00 pm. We are closed on Wednesdays from November - February, January 2009, and for some holidays, including St. Patrick's Day. During the busy season, there is generally about a 15 minute waiting time before a tour starts. An admission fee is charged.

**Is a reservation for a general admission group tour needed?** Reservations are required for all groups, including Girl Scout troops coming for a general admission tour only, so that we can ensure that staff and space are available.

**Are there free accommodations?** Your home clergy may be able to arrange free sleeping bag space at a church of your denomination.

**Can we save money by "packing" lots of people into a hotel room?** **NO!** You must abide by Fire Marshall ratings and Safety Wise Standards. Most hotel rooms can only safely accommodate 4 - 5.

**Is there a place to picnic near the Birthplace?** Downtown Savannah has twenty-two park-like squares suitable for picnics and games. Several of these are close to the Birthplace.

**Where can our tour bus drop us off?** Tour buses drop off/pick up on Oglethorpe Ave. in front of the Birthplace, then move to a parking space designated by the city. The bus may have 10 minutes in the bus space. We are restricted to one bus at a time.

**What is on the top floor of the house?** This floor was added to the house in 1886, the year Daisy was married. The floor houses our reservations desk and administrative office.

**Can adult trip chaperones participate in Special Interest Sessions?** All our rooms have space limitations, but if space is available, they are welcome to participate. We do not have a provision for people who want to "watch" only. Everyone must be committed to active participation.

**What can the other adults who are not participating in the program do while the girls are busy with their Girl Scout Heritage Visit?** The other trip chaperones are welcome to visit the house by purchasing general tour tickets. They will not be in the room with the girls, but staff can help them time the tour conveniently. If you have a whole "group" of adults, you can make a tour reservation. Most adult chaperones appreciate some free time to pursue their own interests in Savannah.

**Can we invite another troop to join us?** You can make a reservation for as many as you like, as long as the space is available. Once you have made your reservation, you must check with the reservation staff before you add any participants. Your sister troop may prefer to make their own reservation to get their own Birthplace Bound, confirmation and reconfirmation materials.

**Where can I park?** We are located downtown where parking can be difficult. We recommend that you park in the nearby parking garage located at 301 W Liberty St, between Montgomery and MLK. You can purchase a 24-hour City of Savannah parking pass for your vehicles good at the meters or in the garage.

## ADVICE FROM BIRTHPLACE VETERANS

Here are some suggestions from other troop advisors:

- ◆ *Sojourn in Savannah* is the BEST way for an adult to prepare!
- ◆ Become a Birthplace fan on Facebook. See what other troops have done and ask your questions!
- ◆ Remember that you do not have to “feed” the parking meters after 5:00 p.m., on the weekends or major Holidays.
- ◆ For safety, make sure each girl has emergency phone numbers, lodging and Birthplace address and phone #.
- ◆ Check and reconfirm hotel plans at least twice. Remember to note the names of everyone you talk to.
- ◆ Watch the Weather Channel for nationwide weather predictions, especially if you are coming by car.
- ◆ Remember that you are representing Girl Scouts. Please let your behavior reflect well upon Girl Scouts and your home town.
- ◆ Get enough rest the night before, so you can really enjoy your visit.
- ◆ If you have a disabled participant, let staff know in advance.
- ◆ Plan! Plan! Plan! Allow a whole day for the Birthplace.
- ◆ Wear comfortable walking shoes.
- ◆ Read *Birthplace Bound* carefully.



### **Will we learn about the 1st Girl Scouts on our Girl Scout Heritage Visit?**

Your orientation will introduce you to early Girl Scouting, but the focus is on Juliette Low. If you are especially interested in Girl Scout history, select *Forward March* for your Special Interest Session or do a Girl Scout history program at 1st HQ.

### **Will we need to pay taxes and tips?**

**Yes!** Tax in Savannah is 7%. Girl Scouts are not exempt in Georgia. A 15%-20% tip is customary for waiters and tour guides, \$1 per bag is usual for help with luggage. A tip is added automatically to a large group bill in restaurants.

### **How far is the Birthplace from the train station and the airport?**

The train station is approximately 10 miles away in a remote area, and transportation must be pre-arranged. The airport is approximately 20 miles from the Birthplace.

### **What can we read about Juliette Low before we come?**

*Lady from Savannah* is a very informative book about Daisy's life and family. *How Girls Can Help Their Country* was the first Girl Scout handbook. Order books from the museum store to read about Daisy.

### **May I have extra copies of Birthplace Bound?**

No. They are expensive to print, so we only have a limited supply. You may copy any or all parts for co-leaders, parents or girls. You may not publish any part in print or on the Internet. We can e-mail a PDF version.

### **If a girl or adult in my troop decides not to come on the trip, can she get a refund?**

No. Once fees are paid, three months prior to your visit, they are **not refundable**. Do not pay for anyone who is tentative.

### **Where do we wear our Birthplace pin?**

It is worn directly across from the membership pin, below the numbers or name tag.

### **Will we get to meet other Girl Scouts?**

During summer, spring break and on Saturdays, there will more than likely be other troops visiting. Call and ask us about the number we expect on the day you visit.

# Museum Store

## MUSEUM STORE

What is a “museum store”? It is a special kind of place where you can purchase objects which have been carefully chosen to relate to the collections in the museum or to the programs and events offered at the museum. At the Juliette Gordon Low Birthplace, our collections include the household possessions of the Gordon family and artwork created by Daisy. We also have some early Girl Scout memorabilia. So in the Birthplace store you will be able to purchase replicas of books and games used by Daisy and the early Girl Scouts, collectible Girl Scout items, tons of costume jewelry, as well as shawls, fans, and purses. We also carry some souvenirs like postcards, magnets, tees and key rings. There is something for everyone -- things you will not find anywhere else in Savannah or at home.

**Birthplace Pin** — The official recognition pin of the Birthplace, to be worn only by individuals who have visited the Birthplace.

**Friendship Pin** — This pin may be worn by individuals who have not visited the Birthplace and also be used as a “swap” or gift.

**Patches** — Choose from over 10 patches to commemorate your visit. *Circle of Friends patches may be purchased by COF members.*

**Victorian Replicas** — Books, glass, china, linens, jewelry and crafts.

**Birthplace souvenirs** — T-shirts, totes, bells, thimbles, magnets, charms and pins.

We do not carry uniforms or many official Girl Scout Merchandise items like you might see in your Council Store. We do carry the GSM vintage collection items.

### ADVANCE ORDERS

Troops often order T-shirts, maps, guidebooks and biographies of Juliette Gordon Low in advance. Due to space restrictions, all orders are shipped and cannot be held.



If your troop plans to wear matching Birthplace T-shirts for your “uniform”, please plan to order your shirts at least 2 months prior to your visit. Currently we carry two T-shirts, \$13 and \$18 (prices are subject to change). The store staff will be glad to answer your questions either through e-mail or by phone. (Pin and patch orders are taken at check-in)

### SHOPPING TIME

Shopping time is scheduled on the day of the GSHV. Troop members generally have 20 minutes in the store. A troop may be split into small groups to keep within safety requirements. Check with the Store Manager if you would like to shop on a day other than your scheduled visit.

### PAYMENT

You may pay for merchandise with cash, personal or troop checks (with a valid driver’s license), US travelers’ checks and the following credit cards: Visa, MasterCard, American Express and Discover. A 7% tax is collected on all items sold.

### PRICES

It is our goal to provide a variety of affordable items to all visitors (\$1–\$30). In addition to store merchandise, we have a special **Troop Craft Section** (see page # 16), which contains crafts made and donated by Girl Scouts (10¢–\$5).

# Questions to keep in mind when making your reservations:

## Restaurants:

- ◆ Can you accommodate groups of 10 or more?
- ◆ Are reservations required?
- ◆ Is there a bar in the establishment?
- ◆ Is the tip included in the bill?
- ◆ Do you offer discounts for Girl Scouts at certain times?

## Tour Companies:

- ◆ Do you have buses available?
- ◆ Will an escort be with us the entire time or will you make the arrangements but leave us on our own?
- ◆ Should we tip our guide or is that already included?

## Hotels:

- ◆ How many people may stay in each room?
- ◆ Do the rooms open onto a corridor or to the outside?
- ◆ Does the hotel provide roll-away beds?
- ◆ Do you have an indoor or outdoor swimming pool?
- ◆ Are you within walking distance of the Birthplace?
- ◆ Does the hotel offer shuttle service to and from the airport or train station?
- ◆ What tax rate does the hotel charge?

---

---

What is **SOJOURN IN SAVANNAH**? A chance to experience the programs offered at the Juliette Low Birthplace. A test run for advisors planning a long-distance trip to the Juliette Low Birthplace in Savannah. YOUR opportunity to visit the Juliette Low Birthplace, to explore Savannah and to share ideas, plans and success stories with adult Girl Scouts from all over the country! The BEST way to catch the spirit of Juliette Gordon Low!

**COST:** The cost is \$55.00 per person. This includes all materials, Birthplace programs and admissions, a Birthplace Pin, Patch and other goodies. Sign up today or e-mail or call for a flyer.

### **SOJOURN IN SAVANNAH**

Registration Form: Please Submit one participant form and reservation request form (page 9-10) per applicant. Print in block letters or type. Return with \$55.

NAME: \_\_\_\_\_

ADULT YEARS IN GIRL SCOUTING: \_\_\_\_\_ GIRL YEARS IN GIRL SCOUTING: \_\_\_\_\_

Date:  February 20, 2010  September 18, 2010  February 26, 2011  September 17, 2011 (9 am - 6 p.m.)

Position: (lease check all that apply)  Council Staff  Service unit manager  Troop leader

Event/ Trip Planner, coordinator  other \_\_\_\_\_

Why are you coming to Sojourn: \_\_\_\_\_

# Service Projects / Girl Scout's Own

## Take Action: Service Projects for the Birthplace “Do a Good Turn Daily”

Service projects provide an opportunity for you to serve the Juliette Gordon Low Birthplace and all of the Girl Scouts who visit here. If your troop is planning a trip to the Birthplace or if you want to be represented by your contribution, may we suggest one of the following projects:

**Costumes For Programs** The Juliette Gordon Low Birthplace costumes approximately 10,000 people annually during Special Interest Sessions. In 2010, we particularly need plus-size *Victorian Supper* dresses. Our visitors come in all sizes and shapes, so we use all sizes. Please contact the Birthplace for information about fabrics, patterns and sizes needed.

**Troop Crafts** Quality handicrafts made by Girl Scouts are donated to the Birthplace to be sold in the Museum Store. Troops deliver their crafts when they visit or send them by mail—we are glad to receive them anytime! The crafts provide visitors with ideas for future activities, fun inexpensive stuff to buy, and provide the Birthplace with an additional source of income. We rely on you for our supply! Any item that is carefully made is welcome (maximum of 12 items per troop)—the more unique, the better! We cannot accept food, or crafts made with food, soap or potpourri. Please attach your troop number, council and where you are from to each item and include instructions for making the project, if appropriate.

## Girl Scout's Own & Pinning Ceremony

The idea of Girl Scouts' Own was Juliette Gordon Low's. It is a traditional time when Girl Scouts reflect on their experiences in Girl Scouting or express their thoughts and feelings. It is planned and carried out by the girls during their Girl Scout Heritage Visit at the Birthplace. During the ceremony, girls and adults are pinned with the Birthplace Pin, which signifies that the wearer is a “Daughter of the House”!

The ceremony traditionally takes place in the Historic Garden and usually lasts about 15 minutes. You will receive a PDF when you reconfirm your visit to help guide the girls in planning the ceremony. At the Birthplace, we do not use candles, sparklers or glitter for ceremonies. We have an American Flag on a pole for use by troops.

## How does the Birthplace Experience fit into the Leadership Journeys?

At each level the trip to the Birthplace can be used as a step in earning their leadership recognitions. In the Leadership Journeys, the word journey is used as a metaphor for personal and intellectual exploration, experience, growth and change resulting in the ability and desire to make the world a better place.

On the way, the girls develop their leadership potential and skills. A visit to the Birthplace involves real journey, which will require girls to make discoveries about a new place and about history. As they connect with each other through the bonding experience of planning a trip and then actually travelling, they will also have the opportunity to connect with the new places they discover and things they learn. Each girl will have many opportunities to lead their troop mates throughout the planning and the trip!

Each of their activities at the Birthplace will involve processes that are girl led as they learn by doing and engage in cooperative learning projects. Finally, as “Daughters of the House” they, like the Gordon family, will have some tools and some ideas to take action in their own communities. The actual journey to Savannah can also help girls on their inward journey to become girls of courage, confidence and character who make the world a better place.



## SIGHTSEEING

The hometown of our founder, Daisy Low, is filled with sites associated with her. Many troops select *Juliette Low's Savannah Historic Trail* during their stay. This cassette and tape player can be rented at the Birthplace Ticket Desk. Favorite "Juliette Gordon Low" places to visit include:

### LAUREL GROVE CEMETERY

Juliette Gordon Low's grave is in the Gordon family plot at Laurel Grove, a park-like Victorian cemetery. Girl Scouts may like to plan a Girl Scouts' Own to hold at the grave site. Honor Juliette Low with a song, a poem, or the Girl Scout promise, but please do not leave flowers, money, food, paper or plastic. If you find trash, dead flowers or debris, please dispose of it. A map with directions to Laurel Grove is available at the Birthplace ticket desk. Laurel Grove is not within walking distance of the Birthplace. Large buses must park outside the cemetery. All groups need a permit to visit the cemetery. Write: Laurel Grove Cemetery, 330 Bonaventure Road, Savannah, GA, 31401. There is a \$25 fee for groups to visit.

**CHRIST CHURCH** was Daisy's home church where she was baptized, confirmed and married, and where her funeral took place. This Episcopal church welcomes all Girl Scout visitors.

**ANDREW LOW HOUSE** was the home where Daisy lived from 1924 until she died in 1927. She inherited the house in 1905 and used it as a rental property.

**FIRST HEADQUARTERS** of the Girl Scouts was in the carriage house behind the Andrew Low House. Juliette Low had part of it converted as "club rooms" for Girl Scout troops in May 1912. When she died, Juliette Low left it to the Girl Scouts of Savannah.

### OTHER SITES

Savannah has a rich variety of historic houses and museums as well as some unusual ways to tour the city. You could easily spend a week getting to know Juliette Gordon Low's hometown.

Beyond the city, coastal Georgia and South Carolina have a wealth of historic and natural sites—Beaufort and Charleston, South Carolina to the north and Hofwyl-Broadfield, Fort King George and Fort McAllister State Historic Parks, Jekyll Island, Fort Frederica National Monument and the Okefenokee Swamp in Georgia.

During **SOJOURN IN SAVANNAH**, a highlight is a session when area museums, tour, and travel representatives gather together for participants to meet and make inquiries that Advisors find Sojourn particularly useful in planning a troop visit.

# Sightseeing



# Birthplace Circle of Friends

Work on a nearly two-hundred-year-old building like the Birthplace is never done! And as we approach the 100th anniversary of Girl Scouting, it is more important than ever that we continue the critical restoration of Juliette Low's home. In 2007–2008, an in-depth investigation of the house was conducted by one of America's top engineering firms along with a team of specialized historic building conservators. They employed the best of preservation technology to identify three major areas for restoration – stabilization and structural enhancement of the top and garden floors, replacement of cracked exterior surfaces with a new protective finish that will eliminate water infiltration and restoration of the eroded sandstone surfaces and steps on the front portico and rear entrance. The complicated and expensive work is designed to protect our irreplaceable National Historic Landmark for future generations. With the financial support of our wonderful Girl Scout friends, troop members and Birthplace vendors, we will conduct this important project. Help our preservation efforts by becoming a 2010 member of the Birthplace Circle of Friends

Individuals, troops and Birthplace vendors are invited to become yearly members of



Circle of Friends Patch for Girl Scout Troops

the **Juliette Low Birthplace Circle of Friends**. The restoration of Savannah's First National Historic Landmark is ongoing. Funds generated by the Circle of Friends become part of an endowed fund

which provides much-needed support for the annual conservation of the house, program buildings and grounds and a travelship fund for disadvantaged Girl Scouts. Individual members receive an official pin for uniform or casual wear. Girl Scout troops receive a certificate and may purchase a **Circle of Friends** patch.

We encourage Girl Scout troops, leaders, and local vendors to show support for Juliette

Low's home by joining the **Circle of Friends** for 2010, and renewing every year.

Ensure that future generations of Girl Scouts will always be able to visit this special place by joining the **Juliette Low Birthplace Circle of Friends**.

Birthplace vendors who have joined the **Circle of Friends** are listed below. Please show your appreciation by supporting these vendors, and ask other vendors you choose to join the **Circle of Friends**, too.

- |                                    |                           |
|------------------------------------|---------------------------|
| <b>EF Education</b>                | Bull River Cruises        |
| <b>Capt. Mike's Dolphin Tours</b>  | Casbah Restaurant         |
| <b>Four Points Sheraton</b>        | <b>Coastline Travel</b>   |
| <b>Country Inn and Suites</b>      | <b>Doubletree Hotel</b>   |
| <b>Hilton Garden Inn</b>           | Leopold's Ice Cream       |
| <b>Intrepid Tours</b>              | <b>Dolphin Magic</b>      |
| Oceanfront Cottage Rental          | <b>Old Savannah Tours</b> |
| <b>River Street Riverboat</b>      | <b>PB'NJ Tours</b>        |
| <b>Patriots Point Naval Museum</b> | <b>Savannah Theatre</b>   |
| Savannah Historic Hideaways        | <b>Old Town Trolley</b>   |
| Subway Restaurants                 | Tootsy Tours              |

## The Juliette Low Birthplace Circle of Friends

- YES!** I would like to become a member of the **Juliette Low Birthplace Circle of Friends**.  
 Platinum Circle (\$1000+ per year)     Gold Circle (\$500 - \$1000 per year)  
 Silver Circle (\$250-\$499 per year)     Green Circle (\$50-\$249 per year)  
 **YES!** My troop would like to become members of the **Juliette Low Birthplace Circle of Friends**. Each girl has agreed to contribute a minimum of \$1 (Minimum for a troop contribution is \$10)  
 A check in the amount of \$\_\_\_\_\_ is enclosed.

Please charge my  Visa     MC     AMEX     Discover

Name or Troop \_\_\_\_\_ Name on Card (for charges) \_\_\_\_\_

c/o (Leader's name for troops) \_\_\_\_\_

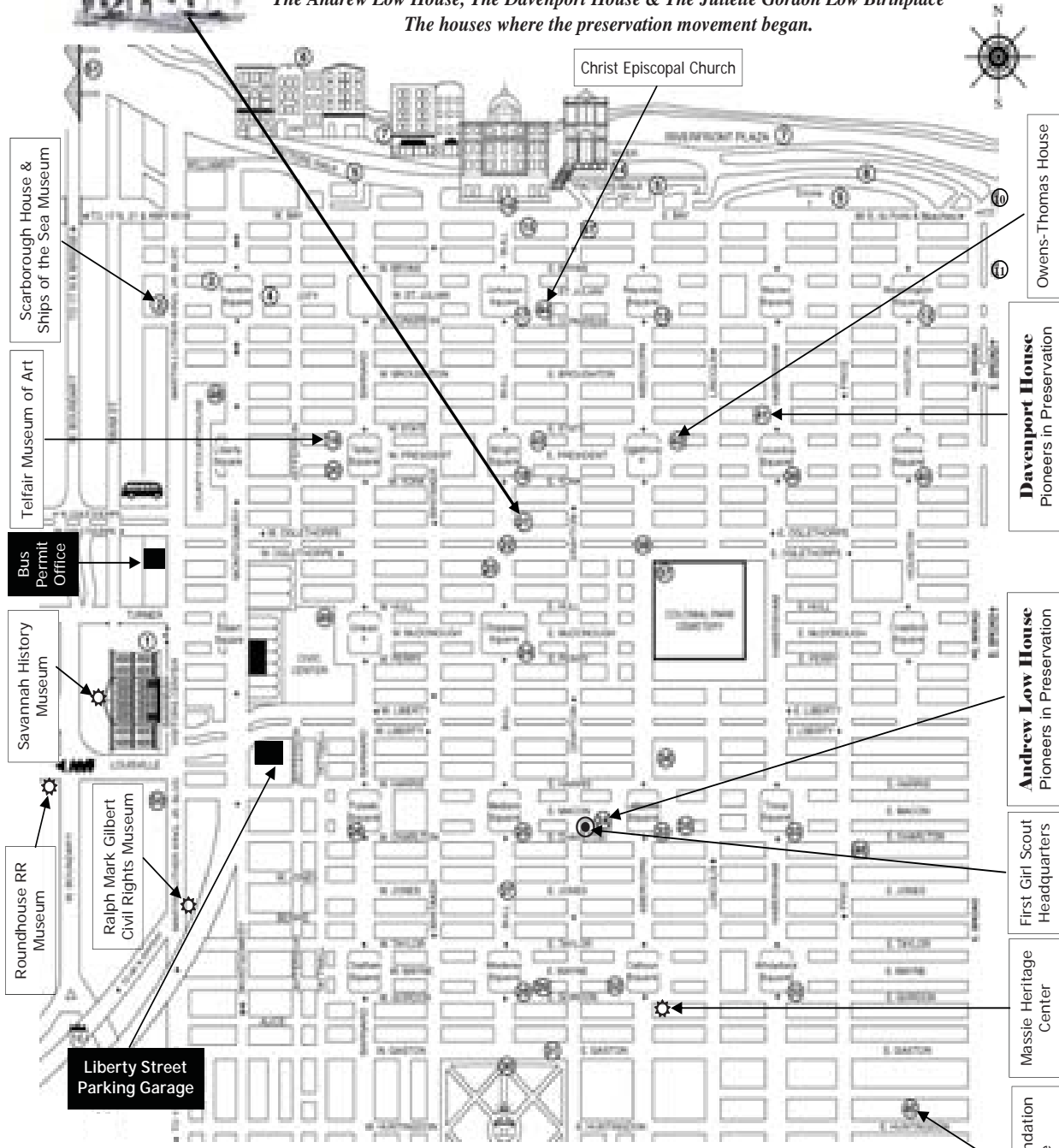
Card # \_\_\_\_\_

# Juliette Gordon Low Birthplace

*First National Historic Landmark in Savannah*

Visit the Pioneers in Preservation:

*The Andrew Low House, The Davenport House & The Juliette Gordon Low Birthplace  
The houses where the preservation movement began.*



# Map of Historic Savannah

- |                                  |                                     |                                     |  |   |
|----------------------------------|-------------------------------------|-------------------------------------|--|---|
| 1. Savannah Visitors Center      | 12. Washington Square               | 23. Independent Presbyterian Church | 34. Whitefield, Throp, and Lafayette Squares | 43. Lutheran Church of the Absolution   |
| 2. Ships of the Sea Museum       | 13. Reynolds Square                 | 24. Chippewa Square                 | 35. Andrew Low House                         | 44. Christ Episcopal Church             |
| 3. First African Baptist Church  | 14. Cotton Exchange                 | 25. Madison Square                  | 36. Hamilton Spenser House                   | 45. King-Tisdell Foundation and Cottage |
| 4. City Market                   | 15. U.S. Customs House              | 26. Polakoff Square                 | 37. Cathedral of St. John the Baptist        | 46. Swift Institute                     |
| 5. Factors Walk                  | 16. City Hall                       | 27. James Square                    | 38. John M. Ledyard                          | 47. Savannah Area Chapter of Omicron    |
| 6. Waterfront of River Street    | 17. Johnson Square                  | 28. Monterey Square                 | 39. Colonial Park Cemetery                   | 48. Chatham County Courthouse           |
| 7. Waterfront Plaza-River Street | 18. Wright Square                   | 29. Spanish Village Area            | 40. Oglethorpe Square                        | 49. Chatham County Courthouse           |
| 8. Working Girl Monument         | 19. Telfair Museum of Art           | 30. Forsyth Park                    | 41. Columbia Square                          | 50. Savannah Civic Center               |
| 9. 1861 Shrapnel Monument        | 20. Trinity United Methodist Church | 31. Gaston Street                   | 42. Green Square                             | 51. Historic Railroad Shops             |
| 10. Inland Park                  | 21. Juliette Gordon Low Birthplace  | 32. Wesley Memorial                 | 43. Davenport House                          | 52. The Robert Lyndale Memorial Bridge  |
| 11. Fort Mifflin                 | 22. Oglethorpe Avenue               | 33. United Methodist Church         | 44. Owens-Thomas House                       |   |

Juliette Gordon Low Birthplace • 10 East Oglethorpe Avenue • Savannah, GA 31401 • 912.233.4501

## INDEX TO ADVERTISERS

The advertisements in *Birthplace Bound* help fund the printing and mailing of this booklet. The hotels, motels, restaurants, tour companies and sites listed on these pages choose to purchase an advertisement because they want your business. Advertisers listed in **BOLD** on a **shaded line** are members of the **Circle of Friends**. Members' ads display the *Circle of Friends* logo. The Birthplace does not endorse any one advertiser over any other. **For ratings and travel information, please consult AAA, Mobil Travel Club or other travel guides.**

### LODGINGS

NAME	LOCATION	Page
Baymont Inn & Suites	Garden City	62
Best Western Bradbury Suites	Pooler	65
Best Western Promenade	Downtown Historic District	61
Camping	Area Wide	25
Comfort Suites, Historic District	Downtown Historic District	64
Comfort Suites, Savannah Airport	Airport	64
Country Inn and Suites, Airport	Airport	65
<b>Country Inn and Suites - Historic</b>	<b>Downtown Historic District</b>	<b>25, 61</b>
Courtyard by Marriott	Downtown Historic District	25, 62
<b>DoubleTree Hotel</b>	<b>Downtown Historic District</b>	<b>IBC</b>
<b>Hilton Garden Inn-Midtown</b>	<b>Midtown</b>	<b>IBC</b>
Fairfield Inn Midtown	Midtown	66
<b>Four Points Sheraton – Historic</b>	<b>Downtown Historic District</b>	<b>25, 59</b>
Girl Scout Council of Historic GA, Camp Low	Rose Dhu Island/Southside	25, 29
Hampton Inn & Suites – Gateway	South Savannah	63
Hampton Inn & Suites Historic District	Downtown	66
Holiday Inn Express Conference Center	South Savannah	63
Holiday Inn Pooler	Pooler	64
Inn at Ellis Square	Downtown Historic District	60
La Quinta Inn & Suites Pooler	Pooler	62
Ocean Plaza Beach Resort	Tybee Island/Savannah Beach	65
<b>Oceanfront Cottage Rentals</b>	<b>Tybee Island/Savannah Beach</b>	<b>59</b>
<b>Patriots Point Naval Museum</b>	<b>Charleston, SC</b>	<b>41</b>
<b>Savannah Historic Hideaways Vacation Rentals</b>	<b>Downtown Historic District</b>	<b>25, 63</b>
Savannah Garden Hotel	Midtown	67
Staybridge Suites Historic District	Downtown Historic District	62
Tybee Island Tourism Council	Tybee Island/ Savannah Beach	42
Tybee Vacation Rentals	Tybee Island/Savannah Beach	61

### RESTAURANTS

NAME	LOCATION	PAGE
Blimpie Subs and Salads	Downtown Historic District	51
<b>Casbah Moroccan Restaurant</b>	<b>Downtown Historic District</b>	<b>26, 52</b>
Crab Shack	Tybee Island/ Savannah Beach	26, 58
Express Café & Bakery	Downtown Historic District	56
Fuddruckers	Downtown Historic District	66
IL Pasticcio	Downtown Historic District	55
Island Picnic and Catering	Tybee Island/Savannah Beach	58
Lady & Sons/ Uncle Bubba's Oyster House	Downtown & Wilmington Island	57
<b>Leopold's Ice Cream</b>	<b>Downtown Historic District</b>	<b>26, 53</b>
Melting Pot	Downtown Historic District	56
Mr. Koolz Gelato & Water Ice	Downtown Historic District	56
One Eyed Lizzie's	Downtown Historic District	58
Pirate's House	Downtown Historic District	58
Spanky's/ Riverhouse Restaurant/Tubby's/ Fiddlers	Downtown Historic District	52
Smooth	Downtown Historic District	53
Soda Pop Shoppe	Downtown Historic District	59
<b>Subway</b>	<b>Area Wide Subway Locations</b>	<b>26, 56</b>
Taste of India	Downtown Historic District	54
Tony Roma's	Downtown Historic District	53

## ATTRACTIONS, TOURS AND SERVICES

# Index to Advertisers

NAME	LOCATION	PAGE
Adventures in Savannah	Area Wide	25, 32
Andrew Low House	Downtown Historic District	22, 51
Bull River Cruises	Wilmington Island Departure	25, 46
Captain Mike's Dolphin Tours	Tybee Island Departure	25, 31
Carriage Tours of Savannah	Downtown Historic District	25
Coachlight Tours	Area Wide	26, 51
Coastline Travel	Area Wide	35
DeBott Travel Unlimited	Area Wide	67
Dolphin Magic	Downtown/ Tybee	48
EF Education	Area Wide	IFC
Eti-Kit	Downtown Historic District	32
First Girl Scout Headquarters/ Camp Low	Downtown Historic District	29
Ghost Talk, Ghost Walk	Downtown Historic District	36
Green Feet Walkabouts	Downtown Historic District	26
Historic Savannah Carriage Tours	Downtown Historic District	40
Intrepid Tours	Area Wide	26, 45
Juliette Low's Savannah Historic Trail	Downtown Historic District	26
Kelly Tours	Area Wide	47
Kitchens on the Square	Downtown Historic District	30
Old Fort Jackson	East Savannah	23, 34
Old Savannah Tours	Area Wide	44
Old Town Trolley Tours	Downtown	26, 39
Patriots Point Naval Museum	Charleston, SC	41
PB'NJ Tours	Area Wide	33
Photos by Becky	Area Wide	36
Puppet People	East Savannah	36
River Street River Boat	Downtown	38
Roundhouse Railroad Museum	Downtown	23, 34
Savannah Dan Walking Tours	Downtown Historic District	40
Savannah Fun Tours	Downtown Historic District	40
Savannah History Museum	Downtown	23, 34
Savannah Movie Tours	Downtown Historic District	26
Savannah Safari	Downtown Historic District	26, 43
Savannah Story Tour	Downtown Historic District	26, 46
Savannah Theatre	Downtown	26, 37
Ships of the Sea Museum	Downtown	24, 30
Square Routes Tours	Area Wide	26, 43
Swept Away Travel	Area Wide	26, 49
Telfair Museum of Art	Downtown Historic District	24, 43
Tootsy Tours	Area Wide	41
Tours by BJ	Area Wide	26, 30
Tybee Island Visitors Center	Tybee Island/ Savannah Beach	42
Tybee Lighthouse & Museum	Tybee Island	24, 44
Tybee Island Marine Science Center	Tybee Island	24, 50

# Information Charts

Sightseeing, Activity & Visitor Information Charts					
MUSEUM, SITES & HISTORIC HOUSES	HOURS	WALKING TOURS	RATES	GROUP	ET CETERA
JULIETTE GORDON LOW BIRTHPLACE 10 E Oglethorpe Ave., 31401 912-233-4501; <a href="mailto:birthplace@girlscouts.org">birthplace@girlscouts.org</a> Girl Scout National Program Center owned & operated by Girl Scouts USA	Mon – Sat 10 a.m. – 4 p.m. Sun 11 a.m. – 4 p.m. Closed: Wed. (Nov – Feb) & some holidays, First 2 weeks in January	Yes	Admission charged. Discounts for registered Girl Scouts	Reservations required for all groups/troops for general tour or program.	1821 childhood home of Daisy Low. Programs for Girl Scout troops; tours for families, individuals. <a href="http://www.juliettelowbirthplace.org">www.juliettelowbirthplace.org</a>
ANDREW LOW HOUSE 323 Auburn Street, 912-233-6854 NOTE – The Low House is not part of the Juliette Low Birthplace property.	Daily 10:00-4:30, Sun 12-4:30 Last tour begins at 4:00 Closed Thurs & Major Holidays	No	Adult \$8.00 Girl Scouts, students \$2.00 Under 5 free	Reservations recommended. All reservations are separate from the Birthplace	Home of Juliette Low (1866-1927), owned & operated by Colonial Dames of Georgia.
BAMBOO FARM & COASTAL GARDENS 2 Canabrake Road & US 17 S., 921-5460	M-F 8-5, Sat 10-5, Sun 12-5	Yes	Donations accepted	Arrange prior to visit	Historic bamboo and horticulture collections, guided tour by reservation
BENCH INSTITUTE 502 East Harris Street, 912-234-8880	Tu-Sat 12-5 Closed Sunday	Yes	Students \$2 Adults \$4	Accepting Group Reservations	Focus: African-American Cultural Center.
CHATHAM COUNTY AQUATIC CENTER 7240 Sallee Mood Dr., 31406; 912-652-6793	M-F 6 a.m. – 8:00 p.m. Sa 7a.m. – 6p.m. Closed Su	Yes	12 & under \$3.00 13 & up \$5.00	Reservations required for all groups. Please call at least 48 hours in advance.	Indoor pools; Certified lifeguards
CHATHAM CO. BOTANICAL GARDEN 1388 Eisenhower 31405; 912-325-3803	Farm House M-F 10-2 Garden Sat-Sun 9:30-4:30	Yes	Adults \$3.00 Girl Scouts \$2.00	Masks \$10 for Girl Scouts Reservations required	Guided tour of 1840s farmhouse & gardens, nature trail.
DAVENPORT HOUSE MUSEUM 324 E. State St., 912-236-6097; <a href="http://www.davenporthousemuseum.org">www.davenporthousemuseum.org</a>	M-Sa 10-4, Sun 1-4 Closed Major Holidays & the 3rd week in January	No	Adult \$8.00 Student \$5.00 Under 6 FREE	Discount- Girl Scouts \$3.50 with prior reservation	Furnished American Federal house (1820), 1 <sup>st</sup> restoration by Historic Savannah Foundation; tailored GS tours by appointment.
FLANNERY OCCOMOR CHILDREN'S HOME 207 E. Charlton St., 912-233-6814	Friday – Wednesday 1-4	No	\$5.00	Arrange prior to visit	Famous Georgia author's childhood home.
FT. PULASKI NATIONAL MONUMENT U.S. 80 East of Savannah; 912-786-5787; <a href="http://www.nps.gov/ftpu">www.nps.gov/ftpu</a>	Daily 9-5, summer hours 9-6:45. Closed Christmas & Thanksgiving	Partial	\$3.00/ person, under 15 Free; 62 + free w/ \$10 Golden Age Passport	Ranger led tours may be arranged with reservation	19 <sup>th</sup> -century & Civil War site, visitor center, nature trails, picnic area.
FT. MORRIS HISTORIC SITE 2528 Ft. Morris Rd., Milledgeville, GA 31328 912-884-8889 <a href="http://www.gasouthwest.com">www.gasouthwest.com</a>	Thurs – Sat 9:00 – 5:00; Thanksgiving	Yes	\$2.75 – \$4.00 Museum entrance	YES	Florida area
GEORGIA HISTORICAL SOCIETY 501 Whitaker St., 31401 912-651-2125 (office), 651-2128 (library)	Tues- Fri 12-6; Sat 10-6 Closed Sun., Mon. & major holidays	Yes	\$5.00 research fee	Small groups (5 to 10) by appointment	Research library, Juliette Low, Gordon and early Girl Scout documents; exhibit
GIRL SCOUT FIRST HEADQUARTERS 300 Dayton St., 202-4028, 888-223-3803	Mon - Sat 10-4 Closed Sun, Holidays	Yes	\$8.00 – tours \$10.00 – Programs	Reservations recommended.	Owned and operated by the Girl Scout Council of Historic-GA. Also separate from the Birthplace
GREEN-MELDRIM HOUSE 14 West Macon St., 912-233-3845	Tu, Th, Fri, 10-4 Sat 10-1 Closed Sun, M & W & for special parish events	No	Adult \$7.00 Student \$2.00 Adult Tour Groups \$4.00 / per	Arrange prior to visit. Call in advance Closed for Parish Events	Headquarters of General Sherman, 1864-65, Gothic Revival architecture.

Sightseeing, Activity & Visitor Information Charts (continued)

MUSEUM, SITES & HISTORIC HOUSES	HOURS	MEMBER ADULTS	RATES	GROUP	ET CETERA
GULLAH/GEORGE SEA ISLAND CTR. P.O. Box 1207, St. Helena Island, SC 29920 <a href="mailto:gullahsc@aol.com">gullahsc@aol.com</a> ; 843-838-1171	10:00-3:00		Adult \$17, Student \$13 5-11 \$7, Under 5 Free	Discounts for 7+ Meals by res. \$10. Accommodations	History, music, folklore and daily living of the Gullah and Geechee. Archives and shop
JERRELL ISLAND MUSEUM 100 Stable Rd., Jekyll Island, GA 31527 912-635-4026 <a href="http://www.jekyllisland.com">www.jekyllisland.com</a>	9:00 am to 5:00 pm daily	YES	Rates vary by tour	Rates available, call for more information.	280-acre historic island with 33 historic buildings. Tours, shopping & restaurants all available
KING-TISDELL COTTAGE 514 E. Huntington St., 912-234-8000	By appointment only	No	Students \$2 Adults \$4	Arrange prior to visit	Focus: African-American heritage and culture.
LAUREL GROVE CEMETERY 802 W. Anderson St.; 912-651-6772	Open-Sun daily	Partial	Adults \$22, senior, student, military \$17, child \$12, student rush \$7	Groups must register <a href="mailto:White300@Bioscience.com">White300@Bioscience.com</a> , 507th, GA, 31404 Contact <a href="mailto:info@white300savannah.com">info@white300savannah.com</a> for arrangements.	Peace like cemetery where Daisy & her family are buried. Gates are locked at 2 No buses.
THE LITTLE THEATRE OF SAVANNAH 703D Louisville Rd. <a href="http://www.littletheatreofsavannah.org">www.littletheatreofsavannah.org</a>	8 pm shows, Thurs - Sun during production runs, some Sun. shows at 3pm	Yes	Reserved programs \$6.00 Self-guided tours \$6.00 Victorian Tea \$7.5	Experience our 18th-century theaters or a classic Victorian tea. Savannah history, architectural, cemetery programs.	Community theatre founded in 1950. Offering a variety of productions all year. Fulfills some requirements for Girl Scout badge. Theatre 101
WASSIE HERITAGE CENTER OLD MINGSIE SCHOOL 287 E. Gordon St., 912-291-5870	Mon-Fri 9:00-4:00 Closed school holidays Weekends by Reservation	Partial	Adult \$10.00, Senior \$9.00 6-12 \$6.00, Under 6 Free	Group rates available.	Visit us at <a href="http://www.mingsieschool.com">www.mingsieschool.com</a> to learn more about Georgia's first public school.
MIGHTY EIGHTH AIR FORCE MUSEUM 175 Bourne Ave. 31322; (1-95 ext 102) 912-748-8888 Ext. 106	Daily 9:00-5:00 Closed: major holidays	Yes	Adult \$2.00 Student \$1.00 Under 6 Free	Arrange prior to visit for programs.	Work on Museum Discovery SIP or Aerospace Badge. Hear personal stories from the men who were there. Restaurant on site.
OUTLAND ISLAND EDUCATION CTR. 771 Sandestin Road, Island Expressway 31410; 912-696-3880	10:00 - 4:00pm daily	YES No paved trails	Adults \$6.00, Seniors \$8.00 4- \$3.00	Minimum of 10 for programs and guided walks. Call ahead for reservations and information on badge program.	Featuring a 2 mile "Trails: Animal Nature Trail", Gardens, Baywood, and 1800's era Heritage Homesite. <a href="http://www.outlandisland.com">www.outlandisland.com</a>
THE OGEECHEE CANAL MUSEUM 681 Ft. Arvie Rd. ( Hwy 204) 912-748-8068 <a href="http://www.savannahogeecheecanal.com">www.savannahogeecheecanal.com</a>	9:00 - 5:00 pm, Friday - Monday, Wed. Closed Tues/Thurs	partial	Adult \$2.00 Student \$1.00 Under 6 Free	Arrange prior to visit for programs.	Nature Center, 184 acres along Ogeechee River, locks 5 & 6 of canal. CAMPING <a href="http://www.socanalmuseum.com">www.socanalmuseum.com</a>
OLD FORT JACKSON 1 Fort Jackson Road 31404; 912-292-8945	Daily 9-6, Closed Xmas, New Years, Thanksgiving	Restricted	Adult \$6.00, Stud. & MIL \$4.00, Sr \$3.00 Under 6 Free	Call Scout Office, \$6 per person. Reservations required.	1812 and Civil War period fort, picnic area, box lunches and special Girl Scout programs/fees
R M GILBERT CIVIL RIGHTS MUSEUM 460 MLK, Jr., 31401; 912-231-8900	Mon-Sat 9-5 Closed Sun.	Yes	Adult \$8.00; Children \$5.50 Sr.citizen \$6.00	Please call to arrange	Dedicated to the Civil Rights struggle in Savannah.
ROUNDHOUSE RAILROAD MUSEUM 601 W. Harris St., 31401; 912-651-6823	Daily, 9-6, Closed Xmas, New Years, Thanksgiving	No	Adults \$10.00, Students \$8.00	"Granfather Gobard" program \$6.00 per person, min 12. Reservations required.	Railroad complex from 1850s. Programs: black sewing & classes, lunch & dinner program.
SAVANNAH HISTORY MUSEUM 303 MLK Jr. Blvd., 31401; 912-651-6825	M-F 8:30-5:30, Sa & Su 9-5 Closed Thanksgiving, Xmas, & New Years	Yes	Please call to inquire	Please call to arrange	Low family carriage, collection of 19th-century ladies' and girls' fashions; Revolutionary & Civil War memorabilia.
SAVANNAH CHILDRENS THEATRE 2701 E. Victory Drive, Savannah Ga. 31404 912-233-2876 <a href="http://www.savannahchildrenstheatre.com">www.savannahchildrenstheatre.com</a>	Call to inquire	partial	Average Ticket Price \$5-\$75	Call to inquire about shows, field trips and classes	The mission of SCTT is to inspire, educate and entertain children and families through the experience of quality theatre both on and off the stage.
SAVH COLLEGE OF ART & DESIGN Admission Department, 342 Bull St., 31401; 1-800-869-7223	M-F 8:30 - 5:30; Sat. 10-4; Closed Major Holidays and Sundays	Yes	Tour Free; Program rates vary	Variety of programs available	<a href="http://www.savh.edu">www.savh.edu</a>

# Information Charts

# Information Charts

MUSEUM, SITES & HISTORIC HOUSES	HOURS	WHEELCHAIR ACCESS	RATES	GROUP	ET CETERA
SAVANNAH CULTURAL AFFAIRS P.O. Box 1027, 31402; 9 W. Henry St. 912-651-6417, fax 912-651-3677	By appointment Mon-Fri 8 :30-5 :00	Yes	Rates vary, all supplies included. Inquire about free plays & festivals	20 max per session	Earn badges in creative dramatics, multi-media visual arts, creative movement or dance
SAVANNAH NATL WILDLIFE REFUGE 1000 Business Cr. Dr. Ste. 1B, 31405 912-652-4415	Daylight hours 7 days a week		Free	Start at lunch	Mobile drive self-guided driving tour
SAVANNAH SAND GNATS Grayson Stadium, 1401 E. Victory Dr., 912-351-9150	April-September Inquire for times and dates	Yes	Ticket prices vary.	Inquire for group rates; <a href="http://www.sandgnats.com">www.sandgnats.com</a>	Dates to 1941—largest single A baseball stadium in the US
SEABROOK VILLAGE 660 Trade Hill Road, Mableton, GA 31507; 912-884-7008	Tues - Sat 10:00-2:00 Closed major holidays	Yes	Adult \$10.00, Senior \$8.00 Students (8-12) \$7.50	Arrange prior to visit interactive tour	African-American living history village ca. 1800; nature trails; farm animals
SHIPS OF THE SEA MUSEUM/ SCARBROUGH HOUSE 41 MLK Jr. Blvd., 912-232-1511	Tu-Sun. 10:00-5:00 Closed major holidays	Limited, call to arrange	Adult \$8.00 Seniors, Students \$6.00	Girl Scout programs & tours with reservations Group rate \$5.00	1819 Greek revival house. Ship models and maritime paintings & objects; formal garden.
SKIDAWAY ISLAND STATE PARK 52 Diamond Causeway, 31411 912-686-2300	7 a.m. – 7 p.m. Office 8 a.m. – 5 p.m.	Yes	\$5.00 park pass per vehicle Separate fees for group programs Adult \$17.00 (12-61) Youth (2-11) \$10.00 1-2 free Senior (62+) \$16.00	Call to arrange tour or program	Museum/interpretive Center. Giant Ground Sloth and other wildlife exhibits, 5 ½ miles of hiking trails, picnic area
SOUTH CAROLINA AQUARIUM 100 Aquarium Wharf, Charleston, SC 29401 843-579-8600	Open 9am-4pm daily Closed Christmas & Thanksgiving	Yes	Adult \$17.00 (12-61) Youth (2-11) \$10.00 1-2 free Senior (62+) \$16.00	Call for rates	Features thousands of creatures from the mountains to the sea. Watch others play and learn about logger head sea turtles.
TELFAIRS JEPSON CENTER FOR THE ARTS, 912-790-8800; <a href="http://www.telfair.org">www.telfair.org</a> 207 West York Street, Savannah, GA 31401	Su 12-5, M, W, F, Sa 10-5, Th 10-4; Closed Tuesdays and major holidays	Yes	Adults \$15.00 Students (K-12) \$5.00, under 5 free	Inquire for rates or visit <a href="http://www.telfair.org">www.telfair.org</a>	Contemporary art. Features Art & Technology Gallery & Museum-interactive gallery for kids & family. Museum Store
TELFAIR ACADEMY 127 Barnard St., 31401 912-790-8800 <a href="http://www.telfair.org">www.telfair.org</a>	Su 12-5, M, W, F, Sa 10-5, Th 10-8; Closed Tuesdays and major holidays	Yes	Adults \$15.00 Students (K-12) \$5.00, under 5 free	Girl Scout program: Women in Art by reservation. Visit <a href="http://www.telfair.org">www.telfair.org</a> for more information	19th & 20th century American & European art. Period Rooms.
TELFAIRS CEMETERY-THOMAS HOUSE 124 Alston Street 31401; 912-233-5703	Su 1-5, M 12-5; 1-5 10-5 Closed major holidays	No	Adults \$15.00, Students (K-12) \$5.00, 3-5 free	Reservations required	1819 house; excellent example of Regency arch. Original urban slave quarters & museum shop.
TYBEE ISLAND MARINE SCIENCE CTR P.O. Box 1879, 31328; 1510 Strand; 912-786-5917 <a href="http://www.tybeemarinescience.org">www.tybeemarinescience.org</a>	9:00-5:00 daily except Tuesday 9:00-12:00	Partial	Under 3 FREE 4-16 \$3.00, 17-55 \$4.00 Seniors \$3.20	Arrange group rates for program prior to visit. Make reservations well in advance.	Aquariums, marine touch tank, exhibits, beach and marsh walks & activities. Earn Coastal GA Patch (available from GSC of Savannah). Bookstore
TYBEE LIGHTHOUSE AND MUSEUM P.O. Box 304, GA 31526; 30 Meridian Dr., Tybee Island, GA 31628	9-5:30; Closed Tuesday & major holidays; Last ticket sold at 4:30	Restricted	Adults (18-67) \$5.00; 6-17 \$3.00 Senior Citizens (61+) \$3.00	Call Savanah \$5.00 GSS rates will change in January 2008	Oldest & tallest lighthouse in Georgia; keeper's cottage/condo; museum located in 1869 gun battery
UNIVERSITY OF GEORGIA MARINE EDUCATION CENTER, Skidaway Island 30 Ocean Science Circle, 912-598-2496	Weekdays 9:00-4:00; Sat 10-5 Closed Sun & major hols	Yes Wheelchair lift	\$4.00 per person Age 9-12 & Seniors \$2.00 Children under 3 FREE	Offer half or full day programs. Call for event schedule.	Coastal ecology programs, aquarium, educational sales shop, Georgia marine life, nature trail, picnic area. <a href="http://www.uga.edu/aquarium">www.uga.edu/aquarium</a>
WORMSLOUGH HISTORIC SITE 7801 Skidaway Road, 912-583-3023	Tu-Sa 9-5, Sun 2-5:30; Closed Mon., holidays	Yes	Adult \$5.00; Seniors \$4.50; 7-18 \$3.50; 6 & under free	Adult group rate (15+) \$4.00 guides free; Children's group rate (15+) \$3.00 PAP	Remains of colonial home, oldest structure in GA; Ferns oak avenue, nature trails, picnic area

# Hotels, Campgrounds, and Sleeping Bag Accommodations

SITE	LOCATION	DEPOSIT	FEES	FACILITIES	OTHER
CAMP LOW - Girl Scouts of Historic GA 912-236-1571	12 miles to the Birthplace	\$50	\$40 per day \$75.00/weekend	Electricity, water, flush toilets, showers, picnic tables, ice, dock, nature trails, cabins and tents	Troop camping, pool May 1-October 1, trading post by request
COUNTRY INN & SUITES - SAVANNAH HISTORIC (912) 921-5000; 320 Montgomery Street, Savannah GA 31401	6 Blocks from the Juliette Gordon Low Birthplace <a href="http://www.countryinnsavannah.com">www.countryinnsavannah.com</a>		Room tax is \$27.50 per Girl Scout	101 Rooms, indoor Heated Pool, Free Breakfast Buffet, Complimentary High Speed Internet, Guest Laundry	Located in Savannah's Historic District, just minutes away from the Juliette Gordon Low Birthplace.
COURTYARD BY MARRIOTT HISTORIC DIST., 415 West Liberty Street, Savannah, GA 912-644-6880, fax 912-790-8288	5 Blocks from the Juliette Gordon Low Birthplace.	No deposit required	10% discount on weeknights	156 rooms, complimentary high speed internet Sundry Shop, 3 rooms, coffee maker, hair dryer & iron and ironing board. Luxury bedding.	Savannah's Historic District. Southern elegance and charm combined with expert service and amenities.
FORT MCKERLER STATE PARK 3084 Ft. Mcckerler Rd. Richmond Hill, GA 31324, 727-2326, 800-864-7275	10 miles east off Richmond Hill CR Spur 144 <a href="http://www.gastateparks.org">www.gastateparks.org</a>	1+ night stay	Tent \$22 per night 62+ \$17.60 per night	Dump station, electricity, water, flush toilets, showers, laundry, picnic tables, and fishing	Fort Museum, trails, 2 pioneer camp areas, cottages, tours, campground, group facilities.
FOUR POINTS SHERATON 15 MLK JR. BLVD., SAVANNAH, GA 31401 912-790-1000	DOWNTOWN HISTORIC SAVANNAH <a href="http://www.fourpointsbyshilton.com/savannah">www.fourpointsbyshilton.com/savannah</a>	NONE	\$119.00 (4 per room)	Business Center, Meeting/Banquet Space, Piano Lounge, Elf's Restaurant, Fitness Center, Outdoor Pool, Valet	The new Four Points Historic Savannah offers Savannah's best charm and hospitality.
HUNTER ARMY AIRFIELD GUEST LODGE 912-865-2060	15 minutes from the Birthplace	Yes Credit Card	Inquire	All home appliances	14 days prior to visit - 1 person must be military-dependent
SAVANNAH HISTORIC HIDEAWAYS VACATION RENTALS; 912-604-6154	In the heart of downtown	1+ nights stay	15% discount for Girl Scout	Luxury bedding. Complete luxury homes with stocked kitchen, laundry rooms, courtyards, sleeps 2-16 limited availability for up to 20.	Savannah's downtown district; grills, private drives, Nintendo, games, TV/VCR/DVD/ stereo. Free WIFI.
542 E. Taylor St; 541 E. Jones Lane	15 miles from Visitor's Center <a href="http://www.gastateparks.org">www.gastateparks.org</a>	Yes, varies	Tent \$23.00 RV \$25.00	Dump station, electricity, water, showers, laundry, cable, group pioneer camping, picnic tables, nature trails, and flush toilets.	Trails, programs, camping, 5 1/2 miles of hiking trails
SKIDAWAY ISLAND STATE PARK 52 Diamond Causeway, 31411; 598-2300, 598-2301; - 800-864-7275	1/2 mile from beach		\$12 per person per night You must clean up after yourselves!	Electricity, water, flush toilets, showers, and picnic tables, Heated and air conditioned cabins for 150	Kitchen and dining hall available at extra charge. Basketball, volleyball courts, campfire circle.
TYBEE ISLAND 4-H CENTER P.O. BOX 1477, Tybee Island 31328 912-786-5534	18 miles from Savannah; weekends				

# Tour Companies and Activities and Restaurants

COMPANIES	RATES	ET CETERA
ADVENTURES IN SAVANNAH 624 Beauregard St., Savannah, GA 31405 866-709-8687 (toll free), 912-356-9188; <a href="http://www.adventuresinsavannah.com">www.adventuresinsavannah.com</a>	Tailored to your troop's individual needs	Fully escorted by your own Adventure guide, all inclusive itineraries.
BULL RIVER ECO CRUISE P.O. Box 30672, Savannah, GA 31410 1-800-311-4774; <a href="http://www.bullrivercruises.com">www.bullrivercruises.com</a>	group size & tour dependent	Coast Adventure Cruise, Dolphins, Barrier Islands, Trawl Fishing, History, Manches, Estuaries, Birding and more. (More than just a Dolphin Tour) Earn the Coastal Georgia Patch and more. Guaranteed fun and learning experience
CAPTAIN MIKE'S DOLPHIN SIGHTSEEING TOUR 1 Old U S Highway 80, Tybee Island, 31328 (P.O. Box 787) 800-242-0166, 912-786-5848; <a href="mailto:lazzaretto1@aol.com">lazzaretto1@aol.com</a>	\$13.00 Adults \$6.00 Girl Scouts	Dolphin/sightseeing & Sunset cruises on beautiful Tybee Island, only 20 minutes from Historic Savannah. Tour lasts 1-1 1/2 hours. <a href="http://www.tybeedolphins.com">www.tybeedolphins.com</a>
CARRIAGE TOURS OF SAVANNAH <a href="http://www.carridgetours.com">www.carridgetours.com</a>	\$15 per person when booked in advance	50 minute narrated history or Ghost Story tours based on availability Sun-2:45pm, 6-9pm. Departs from City Market. Reservations recommended. Parking available

# Information Charts

# Information Charts

Tour Companies and Activities and Restaurants (continued)	
CASBAH MOROCCAN RESTAURANT 118 E. Broughton Street: 912-234-6168 <a href="http://www.casbahrestaurant.com">www.casbahrestaurant.com</a>	Various Come and savor delicious Moroccan fare in the opulence of an authentic ceremonial tent décor while captivating belly dancers set the mood, and feast on the many specialties!
COACHLIGHT TOURS, LLC <a href="mailto:coachlight01@aol.com">coachlight01@aol.com</a> PO Box 16054, Savannah, GA 31416; 912-721-2184	Rates quoted upon request. All inclusive: Complete service from beginning to end.
GREEN FEET WALKABOUTS "The Gardeners' Tour" 912-713-7792 <a href="http://www.greenfeetwalkabouts.com">www.greenfeetwalkabouts.com</a>	Adult, Children and Group Rates Call or see Web site for schedule Have fun while learning about the flowers, plants and trees of Savannah, GA. Roy Heizer is your licensed tour guide.
INTREPID TOURS, INC., <a href="mailto:girlscouts@intrepidtours.net">girlscouts@intrepidtours.net</a> P.O. BOX 2007 STATESBORO, GA 30459; 888-961-8687;	Providing all-inclusive packages featuring transportation, lodging, meals, dolphin cruises and tours.
JULIETTE LOW'S SAVANNAH HISTORIC TRAIL 10 E. Oglethorpe, 31401; 912-233-4501	Tour Daisy's hometown and see the places where she lived and played!
LEOPOLD'S ICE CREAM 212 East Broughton Street, 912-234-4442; <a href="http://www.leopoldicecream.com">www.leopoldicecream.com</a>	A Savannah tradition since 1919 serving Leopold's Veribes™ ice cream and delicious sandwiches and soups. Everything's homemade. Patches available.
OLD TOWN TROLLEY TOURS OF SAVANNAH 234 MLK, Jr. Blvd., Savannah, GA 31401 912-233-0083; <a href="http://www.historictours.com/savannah/girlscouts">www.historictours.com/savannah/girlscouts</a>	Girl Scout Tour (badge program), Historic Tours, Ghosts & Gravestones Tour, Meals, Lodging, Activities, itineraries developed to fit your budget and interests.
RIVER STREET RIVERBOAT 912-232-6404 9 E. River Street; <a href="http://www.savannahriverboat.com">www.savannahriverboat.com</a>	No trip to Savannah is complete without a riverboat cruise.
SAVANNAH MOVIE TOURS: Foody, Movie, and Scary Ghost Tours <a href="http://www.savannahmovietours.com">www.savannahmovietours.com</a> (912) 234-3440	For groups of over six Girl Scouts, admission for one adult chaperone is free. Movie and Scary Tours: \$12; Foody Tours: \$35 Adult Chaperones: \$20/\$40
SAVANNAH SAFARI WALKING ADVENTURE 912-398-3777, 912-921-4455, 866-709-8687	\$6 per person, includes Safari booklet. Patches \$2; Guides available.
"SAVANNAH STORY TOUR" available at the Davenport House Museum store. 912-236-8097 and E. Shaver Bookseller 912-234-7257	Order ahead by phone. Will be shipped UPS. \$18.95 for tour. You buy/keep for you troop!
SAVANNAH THEATRE 222 Bull St., Savannah, GA 31401; 912-233-7764 <a href="http://www.savannahtheatre.com">www.savannahtheatre.com</a>	Call for Special Girl Scout Rates Popular music and professional choreography from the 1940's to the present are presented in a bright, colorful and fast-moving production filled with lavish costumes and comedic skits. We are 1 block from the Juliette Low Birthplace.
SQUARE ROUTES P.O. Box 10371, Savannah, GA 31412 800-868-6867, 912-232-6866; <a href="http://www.squareroutes@cs.com">www.squareroutes@cs.com</a>	Package prices vary according to hotels, meals, and activities chosen.
SUBWAY Area wide. 888-488-6452 Ext. 6530 for box lunch information	Box lunches available. No group too small or large. Many area locations. Call for information and to preorder.
THE CRAB SHACK, <a href="http://www.thecrabshack.com">www.thecrabshack.com</a> 40 Estill Hammock Road, Tybee Island, GA, 912-786-9857	Patch Program in place if you reserve in advance. Special menu items available for Scout troops. E-mail for details: <a href="mailto:Virginia@thecrabshack.com">Virginia@thecrabshack.com</a>
SWEPT AWAY TRAILWAYS Gray Line Savannah 1115 Louisville Road, Savannah, GA 31415 888-644-6696 <a href="http://www.sweptawaytours.com">www.sweptawaytours.com</a>	Complete Destination Packages, include hotels, meals, tours (Historic, Ghost, Specialty Tours, Beach, Forts and Scavenger Hunts) transportation (Trolley, Mini-bus and Coach)
TOURS BY BJ, <a href="http://www.tourbybj@planters.net">www.tourbybj@planters.net</a> P.O. Box 2485, Savannah, GA 31402; 800-962-6595; 912-233-2335;	Experience the Girl Scout connection in Savannah, Atlanta and Macon. Tours by BJ encourages group activities that result in earning badges, awards and patches. Learning Adventures into Savannah's wilder side. Discover more than meets the eye. Search for alligators, dolphins, crabs, and seashells with naturalist guides.
WILDERNESS SOUTHEAST 912-897-5108 <a href="http://www.wilderness-southeast.org">www.wilderness-southeast.org</a>	Two, four, or six hour Wildlife, Birding, Sea to Shore, or Coastal Georgia patch.

# Historic Churches and Synagogues

HISTORIC CHURCHES	DATES	WORSHIP	OPEN TO PUBLIC	ET CETERA
<b>CATHEDRAL OF ST. JOHN THE BAPTIST</b> Roman Catholic 222 E. Harris St. at Abercorn, 233-4709	Est. 1799 Bldg. 1873	Weekdays 7:30 am & 12 pm; Sat 12:00 pm & 5:30 am; Sun. 8:00, 10:00, 11:30 am. Latin mass 1pm	M-8 P-5; Sun 2-5 Closed for funerals, weddings, seasonal & noon mass	* It is always a pleasure having the Girl Scouts visit!
<b>CHRIST CHURCH</b> 28 Bul Street, 912-233-4191; <b>Reid's House, 18 Alcorn St.</b>	Est. 1733 Bldg. 1840	Sun. 8:00 am, 9 am <b>Sunday School</b> 10:30 am <b>Family services</b> ; <b>Harbortown services</b> 8:00 pm <b>Compline</b>	Fri-Sat 10:30am-3:00pm <b>volunteers providing</b>	<b>Juliette Lee's Church, Est. by John McKinley, 1st Eng. Regiment in America, Reorganized Girl Scout year from Ladies, Rowan Bldg 1819</b> <b>Oldest Black Church in North America.</b> <a href="http://www.ohleebiblicalchurch.org">www.ohleebiblicalchurch.org</a>
<b>FIRST AFRICAN BAPTIST CHURCH</b> 23 Montgomery St., 912-233-6597, 912-233-2244	Est. 1777 Bldg. 1859	Fulfillment Hour 9:00 am 1st Sunday 10:30; 2nd-9th Sunday 7:45 & 10:30	Tours at 11 am, 1pm and 3pm Tue - Sat. Group reservation req	<b>Oldest church building in Savannah</b>
<b>FIRST BAPTIST CHURCH</b> 223 Bul Street, 912-233-2671	Est. 1800 Bldg. 1833	<b>Sunday 11:30 am</b> <b>Sunday School 9:45 am</b>	<b>M-F 9:00-4:00 Request of office</b> <b>102 W. Middleborough St.</b>	Troops recognized from pulpit if usher notified.
<b>INDEPENDENT PRESBYTERIAN CHURCH</b> 207 Bull Street (Box 9256); 912-236-3346	Est. 1755 Bldg. 1891	Sunday School 9:30 am, Sun 11:00, 5:15 am; Wednesday 12:00 noon and luncheon	By appointment	<b>Shared glass windows, Minnie's carcases. Call to see Minnie's display.</b>
<b>LUTHERAN CHURCH OF THE ASCENSION</b> 100 Bul Street, 912-232-4151	Est. 1741 Bldg. 1879	<b>Sunday 8:30 &amp; 11:00 am</b> <b>Summertime 8:00, Sunday School 9:45</b>	<b>Mon-Sat 9:00-1:00</b>	<b>Museum in Sheffield Memorial w/ 19th-century Presidential letters, 1733 Torah &amp; early G.S. documents</b>
<b>MICKVE ISRAEL</b> Reform Jewish Corner of Gordon & Wayne, 912-233-1547	Est. 1733 Bldg. 1876	6:00 pm Friday services (changes in summer) Saturday 11:00 am	M - F 10-12 & 2-4; Other times by special arrangement	<b>John and Charles Wesley memorial windows. More Minnie organs installed in 1982.</b>
<b>WESLEY MONUMENTAL UNITED METHODIST CHURCH</b> 1429 Alcorn St., 912-232-0191	Est. 1808 Bldg. 1875	<b>Sunday 8:45 am, 11:00 am</b> <b>&amp; Summertime 6:00 pm at Wesley Gardens</b>	<b>Mon-Fri 9:00-6:00</b>	

# General Information and Services

<b>CHATHAM AREA TRANSIT, PUBLIC TRANSPORTATION</b> 900 E. Chatham St. 31401, 912-233-5767 <a href="http://www.chathamtransit.com">www.chathamtransit.com</a>	Dial 911	Call for detailed schedules for the bus and wheelchair shuttle.
<b>EMERGENCY</b>		
<b>GEORGIA DEPARTMENT OF INDUSTRY, TRADE &amp; TOURISM</b> P.O. Box 1775 Atlanta, GA 30301-1775 800-4VISITGA <a href="http://www.visitga.com">www.visitga.com</a>		Call website for Georgia opportunities beyond Savannah.
<b>GEORGIA DEPT. OF NATURAL RESOURCES, STATE PARKS &amp; HISTORIC SITES</b> 2 MLK, Jr. Dr., Ste. 1352, Atlanta GA. 30334, 404-656-3530 or 404-656-2770		<a href="http://www.visitga.com">www.visitga.com</a>
<b>HOSPITALS</b>	<b>Decker Hospital</b> 5353 Reynolds St. <b>Memorial Medical Center</b> 4700 Wilkes Ave. <b>St. Joseph's Hospital</b> 11705 Memory Blvd.	912-678-6000 912-390-8000 912-678-4100
<b>LIFEGUARDS</b> Call Sallie Boyles at 912-231-1725 or email <a href="mailto:sallieboyles@bul.com">sallieboyles@bul.com</a>	\$30-\$35 for 2 hours minimum at pools and beaches	Rates are for one lifeguard. You may reach Sallie's answering machine or email her. Make sure the motel pool is open!
<b>PARKING GARAGE Used by Birthplace visitors</b> Liberty Street Garage (912) 644-6534, Liberty and Montgomery Streets	<b>M - F 9AM - 1PM, Sat 9AM - 3PM, Su 5AM - 11AM</b>	<b>The Liberty Street garage is within easy walking distance of the Birthplace. See map for location</b>
<b>PARKING SERVICES</b> (City of Savannah) P.O. Box 2101, 31402; 912-651-6470	Parking near the Birthplace is very limited. Plan to drop off group and move your vehicles for your visit.	Call for information about parking garages. A 48-hour pass may be purchased at the Birthplace for \$8.
<b>SAVANNAH AREA CONVENTION &amp; VISITORS BUREAU</b> 181 East Bay St., 31401; 912-644-5400 ext.423 or (toll free) 877-5843848	<b>SAVANNAH VISITORS CENTER</b> 301 MLK BLVD. 912-844-0455; I River Street, 912-651-6662	<b>Call for questions or help!</b>
<b>SOUTH CAROLINA PARKS, RECREATION &amp; TOURISM</b> P.O. Box 71, Columbia, SC 29202-0071, 800-962-6261		<b>Call for information!</b>
<b>TOUR BUS ORDINANCE OFFICE</b> , (City of Savannah) 651-6468; Visitor Center, 301 Martin Luther King, Jr. Boulevard	Motor Coach Tour Permit \$20, tour only Motor Coach Transportation Permit \$10 per day Multi-Day Combination Permit \$30, 72 hours	Call for information about a tour bus permit-motor coaches without a permit will be fined! Get a map for drop-off and parking areas.

# Information Charts



Dear Troop Leader,

Welcome to Savannah, the Girl Scouts' birthplace and Georgia's First City!

This much-celebrated seaport town on Georgia's emerald coast has long been enticing visitors with our sultry ambiance, striking beauty, and old-world charm. Explore the "Daisy Trail" made famous by Juliette Gordon Low, or embark on a Lowcountry adventure. Learn about Savannah's rich history and "ghostly" past. Take a stroll through 21 squares lined with striking architecture and admire the majestic oaks dressed in Spanish moss. Take in the flavor of our wonderful festivals, museum exhibits, and special events. Whatever pleases your senses, you'll surely find it in Savannah!

If your troop is planning a visit, please tell us about it. We can help you plan your itinerary by forwarding your trip request to our accommodations, tour companies, restaurants, attractions, museums, and entertainment venues. We also offer a sample itinerary with Savannah's girl-scout-friendly attractions, many of which offer special educational programs and patches.

For additional information, please visit [www.savannahvisit.com](http://www.savannahvisit.com), or call us at 1-877-SAVANNAH or locally at 912-644-6400. Ask for me at extension 419, or Lonnie Burch at extension 423. We look forward to seeing your troop in our beautiful city!

Sincerely,

*Mindy Shea*

Mindy Shea  
Director of Tour and Travel Sales  
Savannah Area Convention and Visitor's Bureau

P.S. If your troop is traveling via motorcoach, please be advised that Savannah has a tour bus ordinance. For more information, contact the City of Savannah Motorcoach Office at 912-651-42335.